

Release Details

- Driver: Intel NPU (Neural Processing Unit) Driver – Windows*
- Driver Version: 32.0.100.3053
- Date: October 11, 2024

Notes

- Support for OpenVINO 2024.4
- Added Arrow Lake. The name displayed for the NPU device in Microsoft Windows® Device Manager and Task Manager is aligned with the NPU brand name: Intel® AI Boost.

Fixed Issues

- Microsoft Copilot performance and accuracy improvements over the previous release.
- Enable and optimize
 - Lenovo View Video enhancer use case:
 - Fixed loading issue related to krisp model
 - Enabled and optimized face/eye tracking, 2D/3D conversion
- UD40 Driver version# is now aligned with Understanding Intel® Graphics Driver Version Number

Known Issues

- n/a

Supported Platform

- Products formerly Arrow Lake: Intel® Core™ Ultra Processors (Series 2) - Desktop
- Products formerly Lunar Lake: Intel® Core™ Ultra Processors (Series 2)
- Products formerly Meteor Lake: Intel® Core™ Ultra Processors (Series 1)

Operating System Support

Operating System	Version	Details
Microsoft Windows® 11 64-bit	September Update (22H2)	
	October Update (22H2)	
	October Update (23H2)	
	24H2	

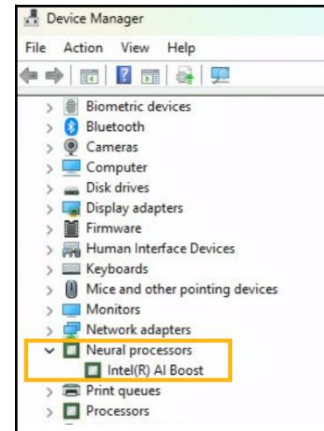
NOTE: NPU will not support workloads on Windows* 10. Disable the NPU device from BIOS for Windows 10.

AI Frameworks Support

Framework	Version
OpenVINO	OpenVINO 2024.4
DirectML	Preview

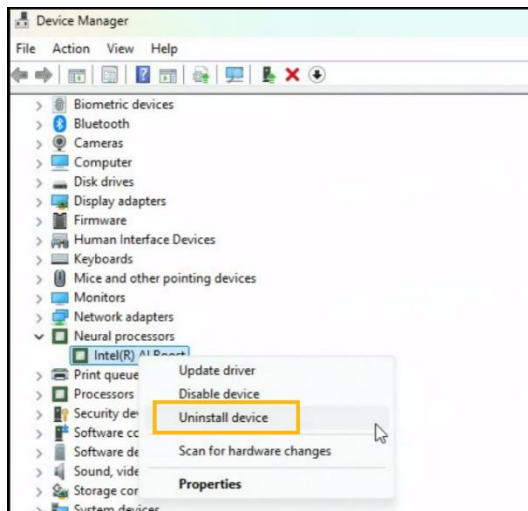
How to Install / Update the NPU Driver

1. **Check if an NPU driver is already installed on your device.** Right click on Windows* start button and select *Device Manager*. Check if *Intel(R) AI Boost* is visible under *Neural processors*.



2. **If an NPU driver is installed, you need to uninstall it.**
 - a. In *Device Manager* window, right click on the *Intel(R) AI Boost* and select *Uninstall Device*.
 - b. When the *Uninstall Device* window appears, select the *Attempt to remove the driver for this device* checkbox and click on the *Uninstall* button.

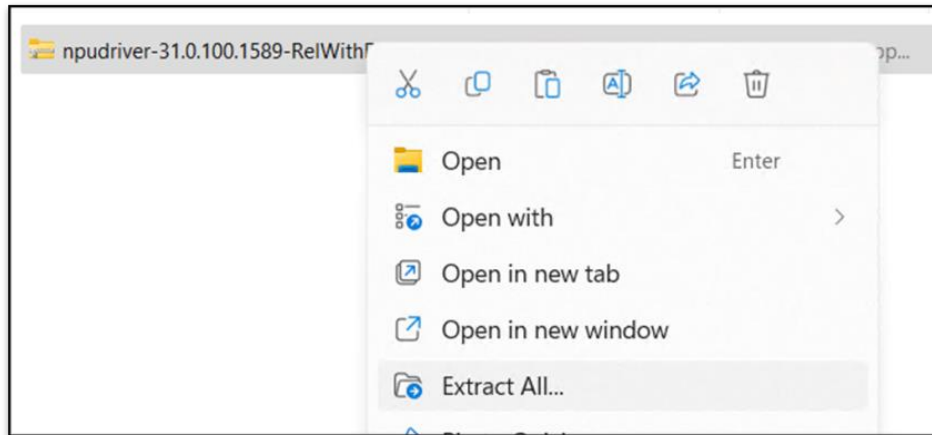
c.




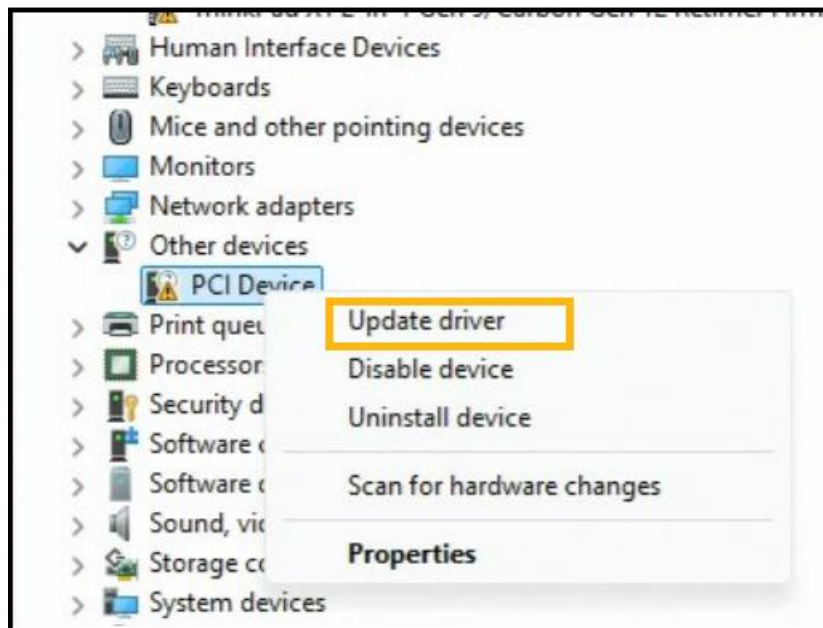
3. Once the device is uninstalled, it's time to **install the new driver version**. Download the latest NPU driver from Intel Download Center.

Intel NPU Driver – Release Notes

4. **Unpack the zip driver package downloaded from Intel Download Center.** To unpack the .zip driver file, right click the file and Extract All -> Extract.



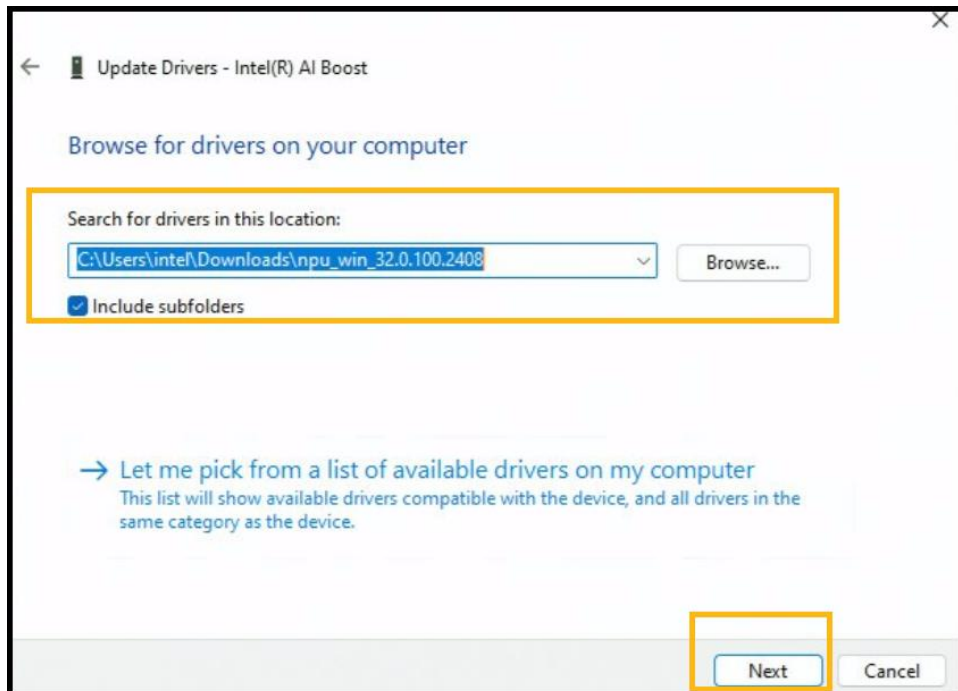
5. **Go to Device Manager** and Scan for Hardware Changes, by clicking on  icon located at the top menu. This will reveal *Other devices*.
6. **Install the new NPU driver.** After unpacking, go to *Device Manager* and find *PCI Device* under *Other devices*. Right click it and select *Update Driver*.



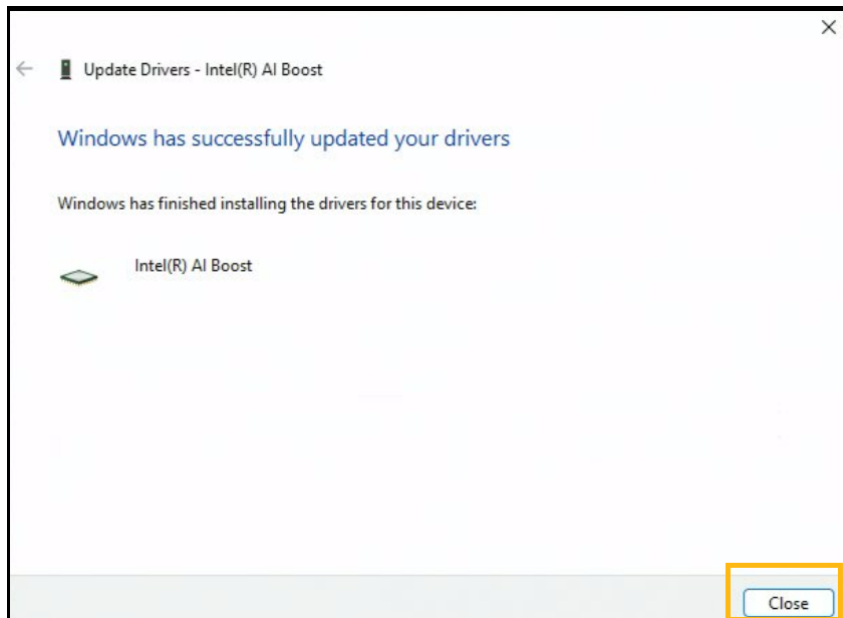
7. In the new Windows that appears, click *Browse my computer for drivers*. Click on *Browse* button and navigate to the location where the unpacked driver was saved.

Intel NPU Driver – Release Notes

- After setting the correct location tick the **Include Subfolders** checkbox and click Next. The driver will now install.



- If the driver installed correctly, you should see the following window saying, “*Windows has successfully updated your drivers*” and the Device Manager should display your *Intel(R) AI Boost* driver under *Neural processors*.



Note: For issues with manual installation, please contact [Intel support](#).

More on Intel Products

For more information on Intel Processors, Graphics and other devices, please visit:

- [Intel® Core™ Processors - View Latest Generation Core Processors](#)
- [Intel® Processors for PC, Laptops, Servers, and AI | Intel®](#)
- [Intel® Arc™ Graphics Overview](#)
- [Intel® Graphics Solutions](#)

Notices & Disclaimers

© Intel Corporation. Intel, the Intel logo, and other Intel marks are trademarks of Intel Corporation or its subsidiaries.

Other names and brands may be claimed as the property of others.

NPU	Neural Processing Unit
DML	Device Modeling Language